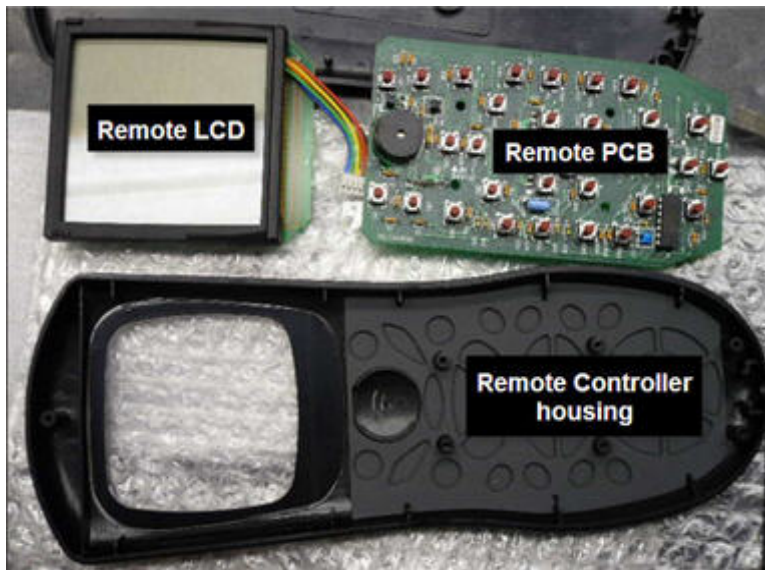


PHP2030 Remote PCB or LCD replacement Instructions:
For questions, clarifications or assistance call 303-670-8882

Tools Required: #1 Phillips screwdriver Bladed screwdriver

Below are the parts of the remote controller we will be referring to:



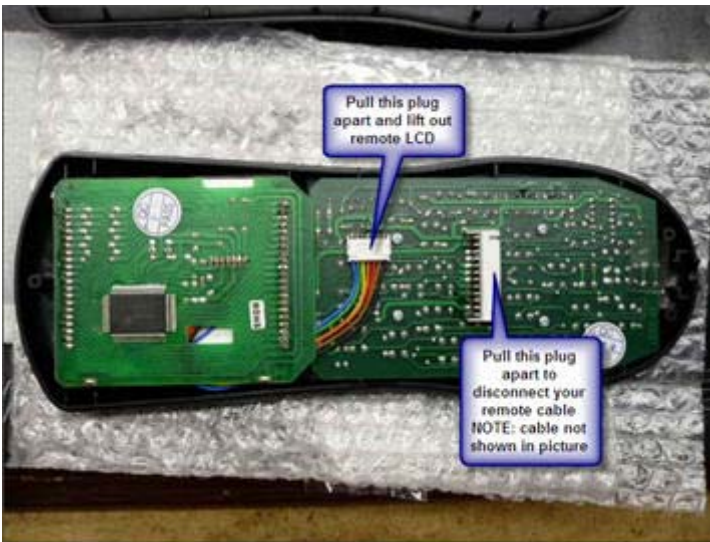
Step 1) Disconnect power from your chair and let it sit for 15 minutes then remove the 3 #1 Phillips head screws from the back of the remote controller



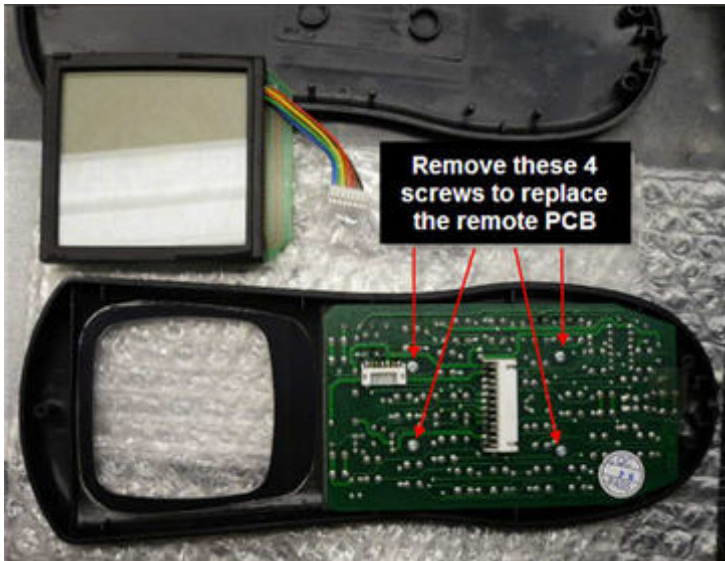
Step 2) Gently pry the case halves apart with a bladed screwdriver being careful not to damage the case.



Step 3) Remove the remote LCD making sure not to touch the screen, if you are only replacing the LCD screen disregard removing the remote cable and advance to step 5.



Step 4) Remove the 4 screws holding the remote PCB to the remote control housing.



Step 5) replace the remote PCB and reassemble in the reverse order of these instructions making sure to put the 2 lower Phillips screws in first when replacing the back cover.