



Premier Health Products

The leading distributor, designer and importer of shiatsu massage chairs utilizing shiatsu massage therapy.



Call-1-866-629-7626 

- Home
- Shipping
- Products
- Back Education
- Warranty
- Contact Us

PHP 2026 – 2027 Replace Remote Control IC Unit

For questions, clarifications or assistance call 303-670-8882

Tools required: One #1 philips screwdriver.

BEFORE BEGINNING, turn the power switch on the chair off and unplug the power cord . Allow the chair to sit for 10 minutes before proceeding.

STEP 1 - Locate your remote and flip it over to expose the back.



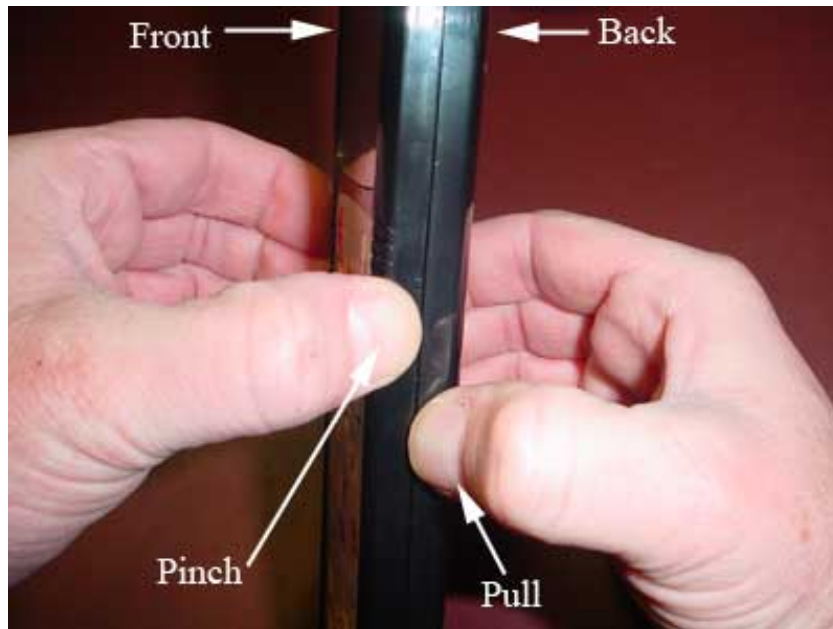
Remove the two screws **1**), and set aside **2**). (don't loose them)

Step 2



Turn your remote over and locate the ridges (circled). To separate the two halves pinch the above locations as described in the next diagram 2a.

Step 2a



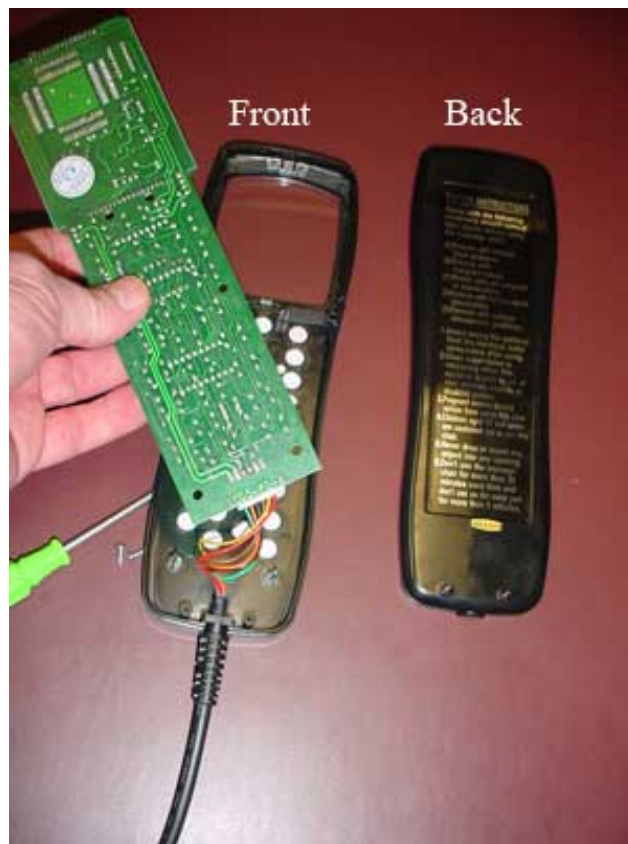
Pinch the front half in the location indicated in step 2 with your left thumb and forefinger and pull the back half apart with your right hand.

Step 3



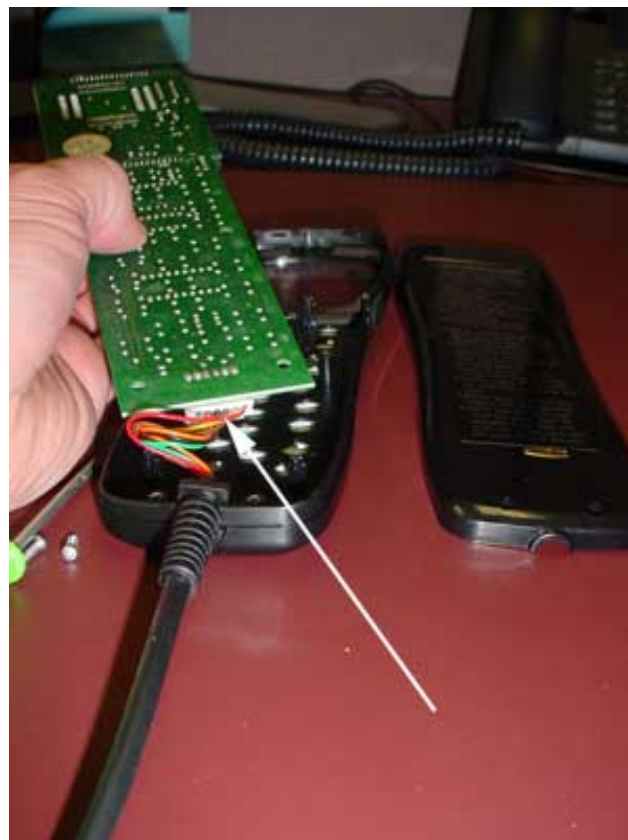
Lay the front half of the remote flat on its face again and set the back half aside as shown. Remove the two screws **1**), and set aside **2**). (don't lose them).

Step 4



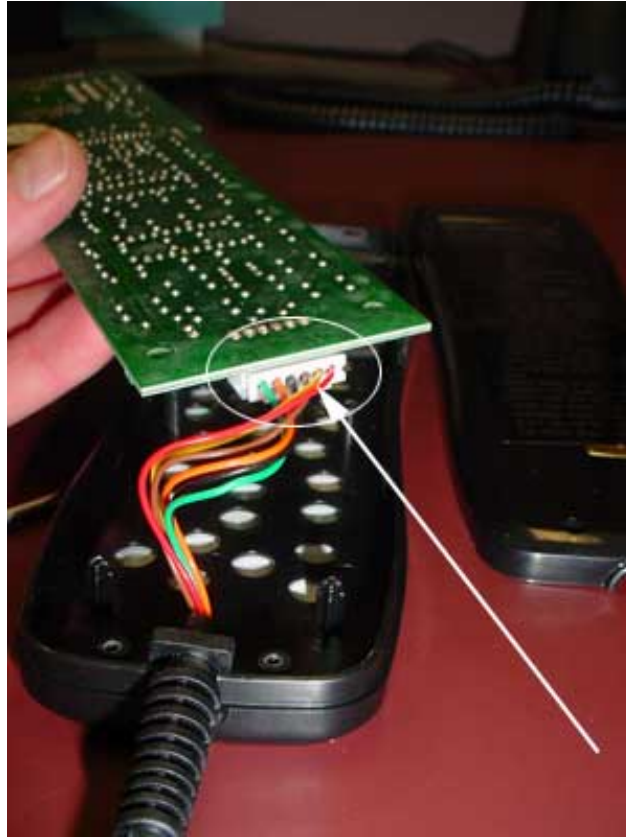
Carefully remove the IC board from the front of the remote

Step 5



Locate the connection to the IC board as shown.

Step 6



Carefully remove the cable from the board holding the white plastic connector, you may have to wiggle it back and forth. Remember the location and colors of the wires. In this diagram, green on the left, red on the right.

Step 7



The IC board will now be free. To install your new board follow these instructions in reverse. Give us a call at 303-670-8882 if you experience any difficulties or need additional help.