



Premier Health Products

The leading distributor, designer and importer of shiatsu massage chairs utilizing shiatsu massage therapy



Call-1-866-629-7626 

Home

Shipping

Products

Back
Education

Warranty

Contact Us

PHP 2026-2027

Board Assembly Replacement

For questions, clarifications or assistance call 303-670-8882

Tools required : 1) # 2 Phillips screwdriver, medium length 2) small needle nose pliers 3) small wire cutters / diagonal cutters.

BEFORE BEGINNING, turn the power switch on the chair off and unplug the power cord . Allow the chair to sit for 10 minutes before proceeding.

Lift up the footrest and secure it by pushing up the supporting bar as shown in step 2.

Step 1



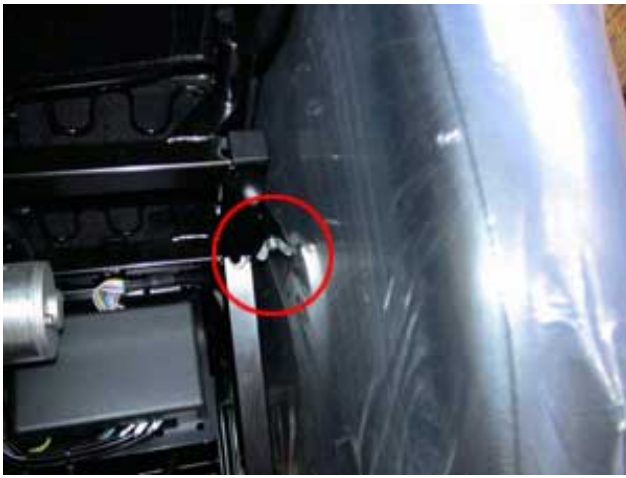
Step 2



Unscrew the wing-nut (silver) inside the left armrest, and then take off the armrest by lifting up.

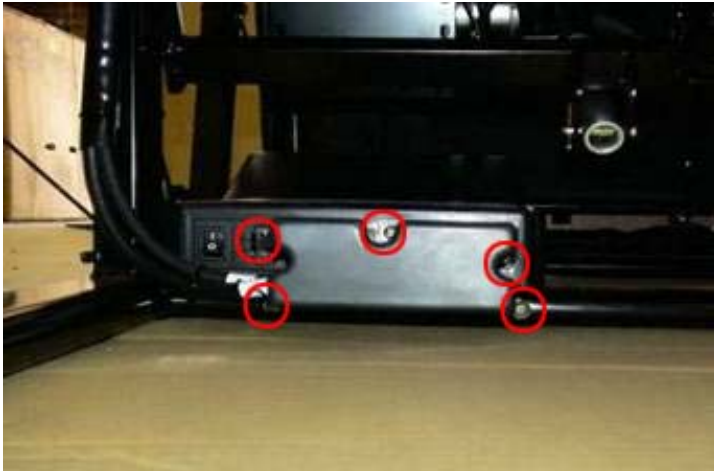
Step 3

Step 4



Take off the 5 screws and remove the cover located in the lower left rear of the chair. Unplug the 3 cables by pushing down on the catch at the top of the plug shown in step 6.

Step 5



Step 6



Take away the remote control before folding the backrest down. Pull the back latch toward you, the back should now be free. With one hand on the top of the back gently lay the back onto the seat as shown below in step 9. DO NOT let the back drop onto the seat unsupported.

Step 7



Step 8

Return to the front of the chair and remove the front screw of the power assembly as shown in step 10

Step 9

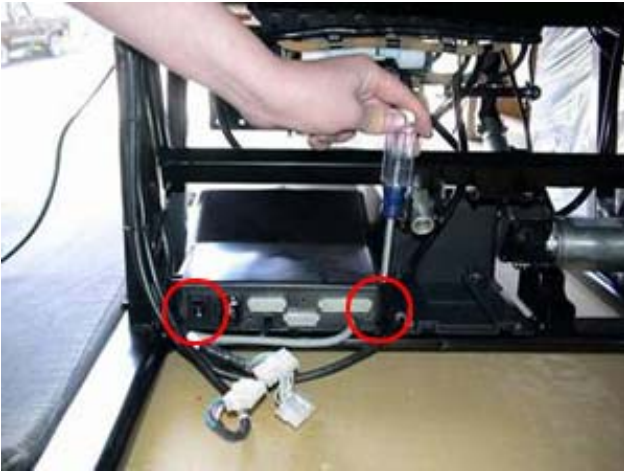


Step 10



Take off the 2 rear screws step 11, and then remove the cover of the power assembly forward to the front of the chair as in step 12

Step 11



Step 12



Step 13



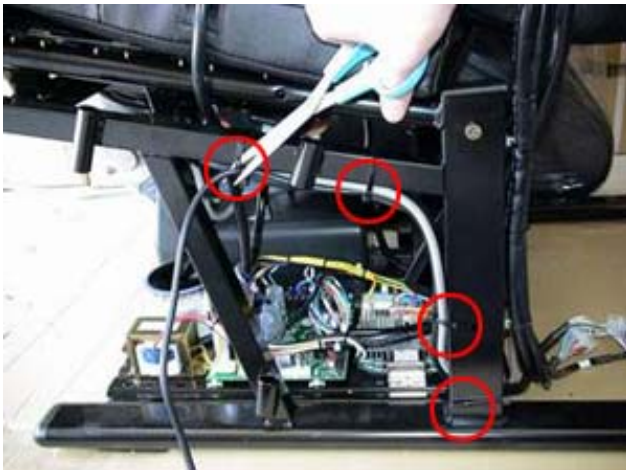
Step 14



Take off the 3 front screws, and then take off the 2 rear screws.

Cut the 4 wire ties (step 15) which secure the remote control's cable, air pipe, and another gray or black cable. (The instructions for the gray or black cable apply only to the PHP 2027. The PHP 2026 does not have a gray or black cable). Then, unplug the gray or black cable under the seat as shown in step 16.

Step 15



Step 16



Install the new Board Assembly by following reverse instructions.

Replacing the Board Assembly is Complete .

Before reassembly of the arms to the chair , perform the following procedure to ensure that the chair is working properly.

Lower the leg rest by releasing the lock.

Plug the chair in.

Turn the power switch on.

Push the red power button once to turn the remote on.

Push the timer button to set the time for 5 minutes.

Push the Health Time or Vigor buttons. The chair will begin a 5-minute programmed function.

Watch the timer circle on the remote for any messages other than the timer countdown.

If the cycle completes with no 'ER' message in the timer cycle, the repair is successfully completed.

You may now reassemble the chair using the reverse order in this document. **CAUTION:** before reassembling, turn the power switch off and unplug the power cord.

When reassembly is complete, plug the power cord in, turn the power switch on, and repeat the same 5-minute program to ensure that no plugs or connectors were dislodged during the reassembly process.

If after reassembly, and during the final 5-minute test, you detect anything that seems inconsistent with normal operation of the chair, call Premier Health Products Customer Support at 303-670-8882 for immediate assistance.

If the final 5 minute test is successful, the repair and reassembly has been successfully completed.

If you are retuning the defective board assembly to PHP, use the carton and packing materials that were sent with the replacement parts.