

PHP 2026 – 2027 Massage Chair

Replacing the Foot/Leg Massage Assembly

For questions, clarifications or assistance call 303-670-8882

Tools required: 1)small pliers,2)needle nose pliers, 3)10mm socket or nut driver, 4) small nippers or cutters, 5)#2 Phillips screwdriver, 6) six (6)small plastic Zip Ties.

BEFORE STARTING, 1>turn the power switch on the chair off and 2>unplug the power cord. Allow the chair to sit for 10 minutes before proceeding.

STEP 1 - Lock the foot / leg rest up.

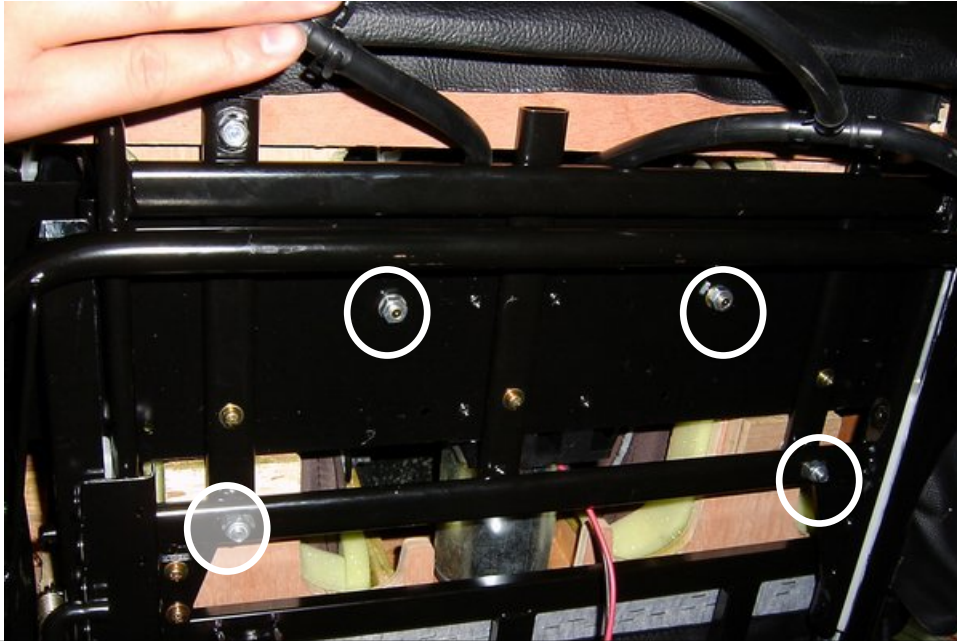


Lift up the footrest



Lock the footrest in the up position by pushing up the supporting bar. To release the lock, lift up the leg rest and the lock automatically releases.

STEP 2 - remove the upholstery cover.

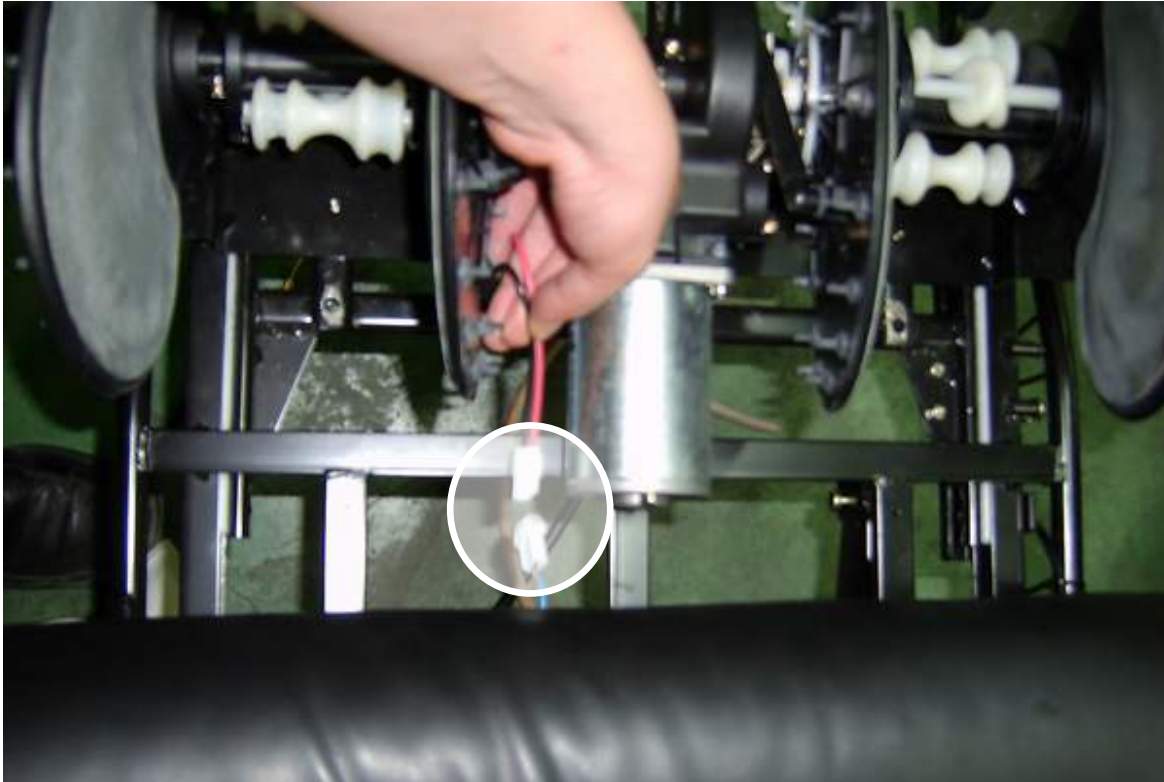


Remove the four (4) 10mm lock nuts to release the upholstery cover from the frame.

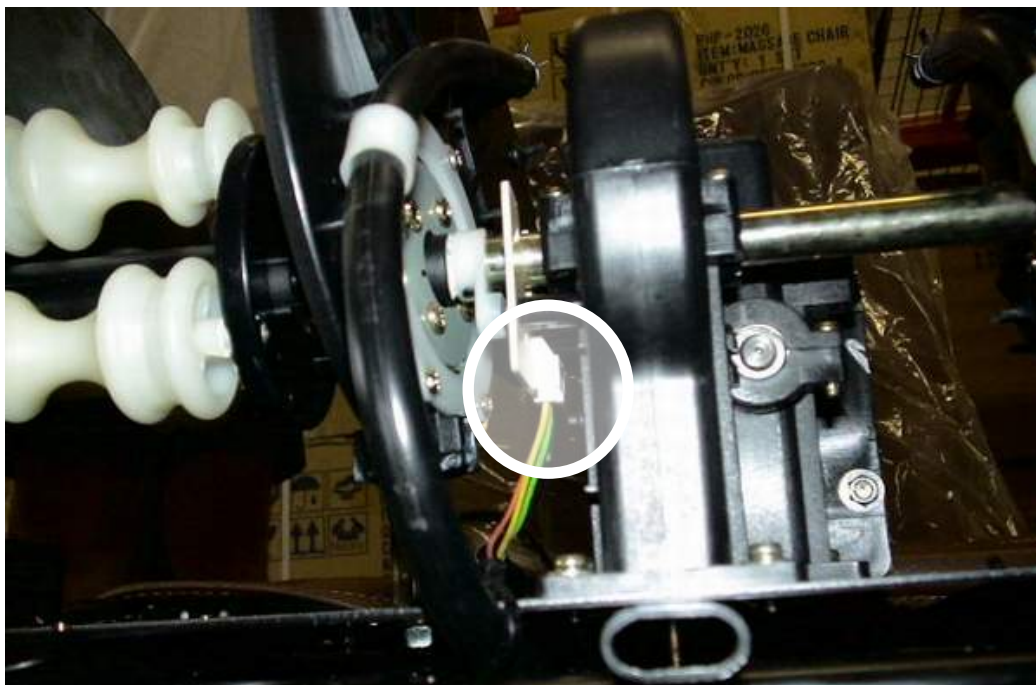


Then remove the upholstery cover by lifting it up.

STEP 3 - Disconnect wire connectors from the motor.

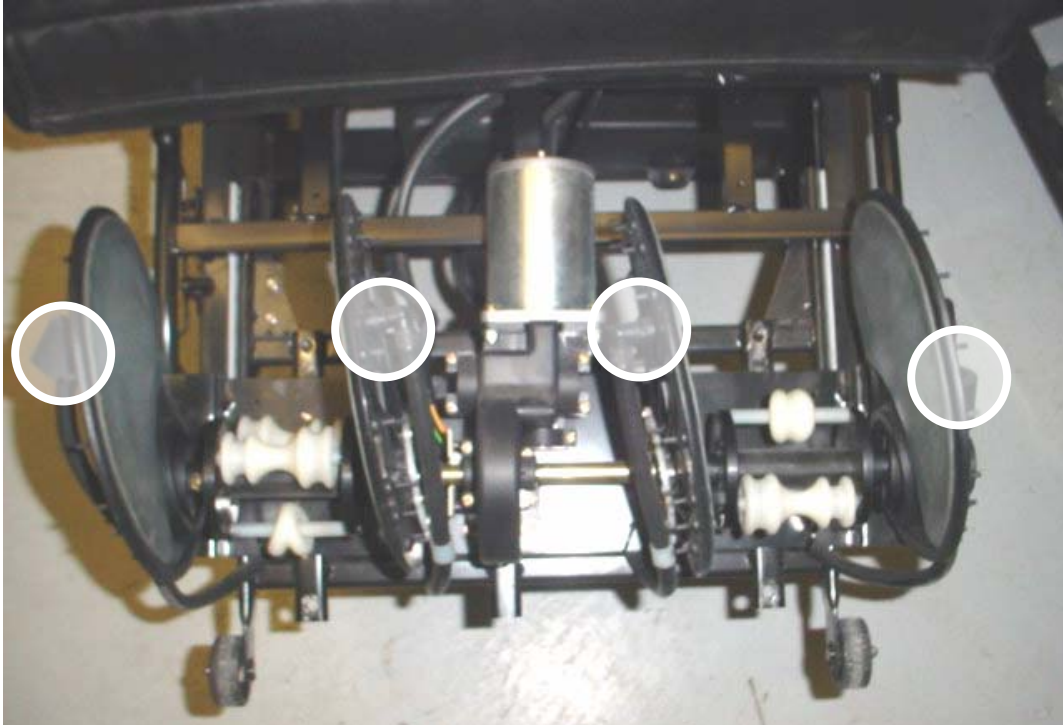


Unplug the wire connector to the motor



Unplug the connector from the ic connector board.

STEP 4 - disconnect the air hoses



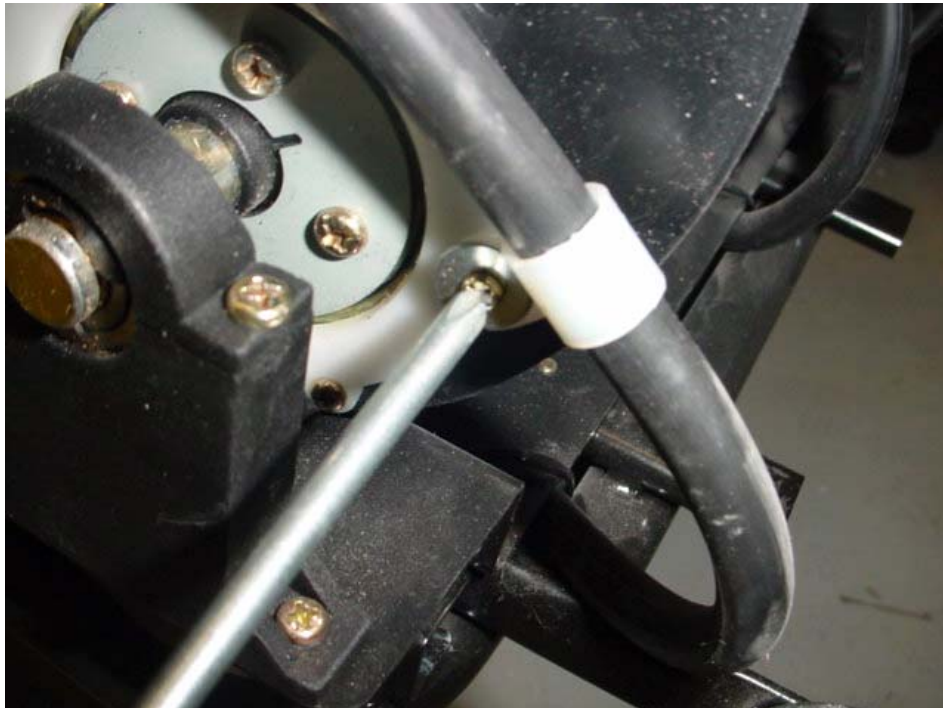
There are four (4) locations where the following air-hose-removal will take place.



Begin by removing the hose clamp that secures the air hose to the elbow joint.

STEP 4 - disconnecting the air hoses, con't

Separate the air hose from the elbow joint. You will be reconnecting the air hose to the same place on the new mechanism. If you feel necessary, mark each hose to ensure you reconnect it to the same position.



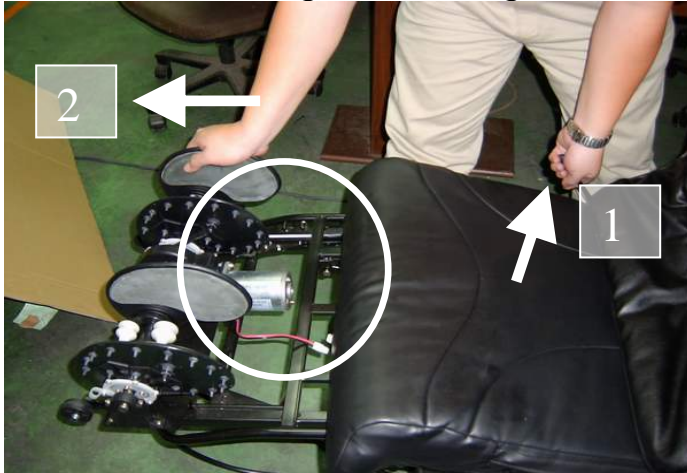
Loosen the clamp holding the air hose to the mechanism and pull the air hose out. You will be reconnecting the air hose to the same place on the new mechanism.

STEP 4 - disconnecting the air hoses, con't

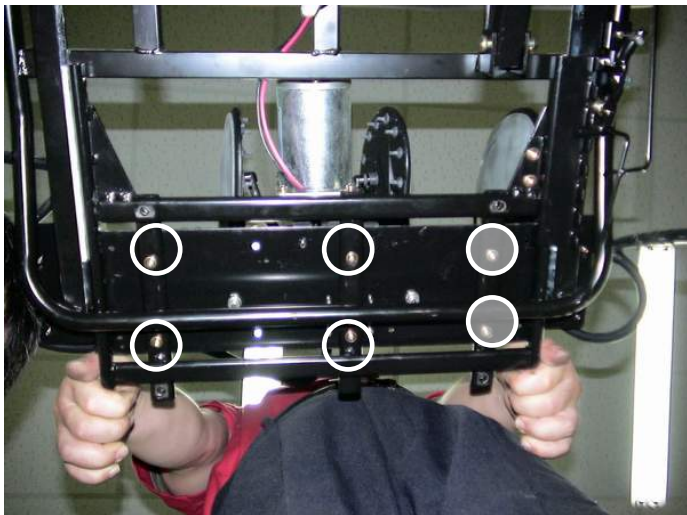


Cut the black plastic ties that secure the air hose to the frame. You need to re-attach plastic tie wraps in the same position when you install the new mechanism.

STEP 5 - removing the massage mechanism from the frame.



1>Pull the footrest extension bar up and 2>slide the footrest mechanism outward to the most forward position.



Remove the six (6) screws under the footrest to release the massage mechanism from the footrest frame. (View is from underneath the assembly looking up)



Lift the mechanism up and away from the footrest frame. Removal is complete

Install the new mechanism by following the steps in reverse order.

Use Extreme Caution when testing the leg massage assembly without the upholstery cover in place.

Before reinstalling the upholstery cover:

1. Plug in the power cord, turn the power switch on, push the red power button on the remote, and then push the 'leg rollers' button once to test slow speed, once to test medium speed, and once to test high speed, and then once more to turn the leg massage off.
2. Test the air function using the hand bulb for the PHP Model 2026, and the Air Legs button for the PHP Model 2027. If the air inflation works properly, make sure the air bladders are completely deflated before reinstalling the upholstery cover.

Using the box and packaging that the new assembly arrived in, package the bad part and call Premier Health Products at 303-670-8882 for shipping instructions and/or labels.

Premier Health Products
PHP 2026 – 2027 Massage Chair
Replacing the Foot/Leg Massage Assembly
For questions, clarifications or assistance call 303-670-8882